

LASM

DEC | JAN | FEB

10-11

QUARTERLY

A PUBLICATION OF THE LOUISIANA ART AND SCIENCE MUSEUM

INSIDE



PLANETARIUM

Holiday Music Magic family show

2



4 Art GALLERIES

Ruins exhibition



WINTER FEATURE

The Final Countdown

6



COVER STORY: PAGE 6

Shuttle Endeavour Launch



LARGE-FORMAT FILM

Coral Reef Adventure

THROUGH JANUARY 2
1 PM TUESDAY–SUNDAY

Enter the extraordinary worlds of the largest, most beautiful, and most endangered coral reefs on our planet. Coral Reef Adventure tells of the courageous expedition of a husband-and-wife team who risked their lives to bring us these powerful images in an effort to help save the world's coral reefs. From Australia's Great Barrier Reef and the majestic islands of Fiji and Tahiti to the mysterious Rangiroa atoll, the journey is breathtaking. Narrated by Liam Neeson and featuring the music of Crosby, Stills, and Nash.



DIGITAL MOVIE

Mummies: Secrets of the Pharaohs

THROUGH FEBRUARY 27
11 AM & 3 PM TUESDAY–FRIDAY;
3 PM SUNDAY

The planetarium's first digital large-format movie, *Mummies: Secrets of the Pharaohs* enters the royal tombs of Egypt, where explorers and scientists seek a window into the life of ancient Egypt by piecing together the archeological and genetic clues provided by mummies. Through ambitious computer graphics and dramatic reconstruction, the movie highlights one of the greatest finds in modern history: the late 19th century discovery of a cache of 40 mummies, including 12 pharaohs. The process of mummification is only one of the fascinating topics that *Mummies* covers. What the scientists are now learning from the mummies may well be used to improve our lives in the future. Narrated by Christopher Lee.

Note: On weekdays, school groups frequently book the planetarium shows at 10:00 AM, 11:00 AM, NOON, and 1:00 PM, and the shows are therefore subject to change. For up-to-date information, please call 225-344-5272 or check www.lasm.org before you visit.



Sky Shows

New!

Season of Light

THROUGH JANUARY 2
AT REGULAR SHOW TIMES
(SEE BACK COVER)

This new holiday show recounts the religious and cultural rituals historically practiced throughout the world during the winter solstice. Besides exploring the possible astronomical explanations for the biblical star over Bethlehem, *Season of Light* takes you through the winter constellations, explains the reasons for seasons, and tells about some of our more lighthearted seasonal traditions, from gift giving and kissing under the mistletoe to decking the halls with greenery and candles. St. Nicholas, Kris Kringle, Father Christmas, and Santa Claus all put in an appearance, too. Narrated by National Public Radio's Noah Adams.

Observing the Universe Past, Present, and Future

IN THE UNIVERSE GALLERY

See images of past, present, and future telescopes, along with real-size replicas of Isaac Newton's reflecting telescope and two early refracting telescopes. These important instruments helped astronomers to develop our present view of the universe.

Made possible by the
Clifford W. Holmes Grant Program

New

Bad Astronomy: Myths and Misconceptions

JANUARY 4–JUNE 26
10 AM & NOON TUESDAY–FRIDAY;
NOON, 4 PM, 6 PM SATURDAY;
4 PM SUNDAY

Were the Apollo visits to the moon actually a hoax? Have aliens landed on Earth? Can you tell your future by the stars? Prepare to see pseudoscience tackled head-on in Bad Astronomy and enjoy a unique approach to learning about the cosmos. Bad Astronomer Phil Plait takes a critical look at popular myths and silly misconceptions, including the erroneous astronomy presented in movies and on TV. He will show you how science can be used to clarify or prove questionable claims, such as the influence of planets on one's life or the possibility of a moon phase causing inclement weather. It's a fun, informative show for the whole family.

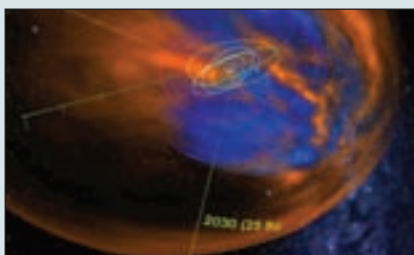


Updated

Digital Universe

JANUARY 4–JUNE 26
2 PM TUESDAY–SUNDAY

Learn about the night sky as never before in this updated version of Digital Universe. Using the world's most extensive, accurate three-dimensional mapping of the universe, this show brings new astronomical information to life in a two-dimensional graphic visualization much like that of an immersive computer game. You will explore the planets of our solar system, the stars of our Milky Way Galaxy, and much more as you travel out to the edge of our known observable universe. A brief tour of the seasonal night sky is included.



FAMILY Shows

Holiday Music Magic

THROUGH JANUARY 2
10 AM TUESDAY–SATURDAY;
5 PM SATURDAY & SUNDAY DURING HOLIDAYS
(DECEMBER 21–JANUARY 8)

MAY BE VIEWED BY CHILDREN UNDER THREE

Our family holiday program features a variety of seasonal songs from Mannheim Steamroller, Burl Ives, Brenda Lee, Kurt Bestor, and others. Visually choreographed with 3-D artistic animation and full-dome holiday-related scenery, this delightful show will entertain all ages.

New

Earth, Moon & Sun

JANUARY 8–JULY 31
10 AM & 5 PM
SATURDAY DURING HOLIDAYS
(DECEMBER 21–JANUARY 8)

This highly entertaining, educational show explores the relationship between the earth, moon, and sun with the help of Coyote. An amusing character adapted from Native American oral traditions, Coyote has many misconceptions about our home planet and its most familiar neighbors. His confusion makes you think about how the earth, moon, and sun work together as a system. Throughout the show, Native American stories help distinguish between myths and science. Learn why the sun rises and sets, how the earth orbits the sun once a year, and how long it takes the moon to orbit the earth. You will examine the moon's orbit, craters, phases, and eclipses; and you will explore past and future space travel to our moon and beyond.



VISUAL MUSIC Shows

Space Park 360

THROUGH MAY 28, 2011
7 PM EVERY SATURDAY
MAY BE VIEWED BY CHILDREN UNDER THREE

Set to popular music, this state-of-the-art full-dome program immerses you in the experience of amusement park thrill rides as it transports you to surreal vistas all over the solar system—the cloud tops of Jupiter, the surface of Venus, and Martian sand dunes.



Pink Floyd: The Wall

THROUGH FEBRUARY 26
8 PM EVERY SATURDAY

Back again by ever-popular demand, this legendary album is presented using the planetarium's new ultra-high-definition, full-dome video projection system. Experience this classic album in 5.1 Surround Sound with incredible animated images.



art galleries



Lost in Time—Two Exhibitions in Black and White

American Ruins: Photographs by Arthur Drooker
The Dark Side: Photographs by Clarence John Laughlin, 1935–1961

JANUARY 8–MARCH 2

Two concurrent exhibitions of photography serve as reminders of our shared past and the need to preserve our unique historic treasures. *American Ruins: Photographs* by Arthur Drooker features a stunning visual record of significant architectural sites across the United States. In Drooker's photographs, crumbled walls and weathered facades stand in defiance of time. Augmenting this display is a selection of haunting photographs by Clarence John Laughlin that capture a vanishing urban landscape. *The Dark Side: Photographs* by Clarence John Laughlin, 1935–1961 provides insight into the broad range of themes explored by this American master, who is best known for images of southern plantation architecture.

The 50 photographs taken by Drooker are the result of an intensive two-year documentary project. On view are images of ancient Native American dwellings in the Southwest, the remains of Gilded Age mansions on the East Coast, Civil War-era ruins in the South, a colonial settlement in the mid-Atlantic region, a ghost town in the West, and a king's summer residence in Hawaii. Among the landmarks familiar to local visitors is the Cottage Plantation (1824). Drooker traveled to 25 historic sites in 16 states. The ruins he selected had to meet certain criteria: they had to be part of a preservation program, have historical value, and represent the geographic and architectural diversity of America.

To record these sites, Drooker used an infrared format on a specially adapted 25 mm camera. Infrared photography captures a spectrum of light that is unseen by the naked eye and that envelops its subjects in an otherworldly glow—the perfect format to evoke the visual poetry of these landmarks. Drooker explains that he is “drawn to these sites to make a spiritual connection with those who have gone before us, preserve the visual memory of what they left behind, and restore what they've built to our collective memory.”

Arthur Drooker is an award-winning writer and director of television documentaries. *American Ruins*, the book that resulted from the project, was released by Merrell Publishers in 2007 and was bestowed the 2007 Best Book Award in general photography by USAbooknews.com, a publishing industry Web site. This exhibition was organized and developed by Arthur

Drooker; all photographs are by Arthur Drooker and circulated through www.guestcurator.com, a professional touring exhibition company.

Also on view is *The Dark Side: Photographs* by Clarence John Laughlin: 1935–1961. Born in Lake Charles, Clarence John Laughlin (1905–1985) spent most of his career in and around New Orleans. On loan from the Historic New Orleans Collection, Clarence John Laughlin Archive, the 26 black-and-white elegiac images by Laughlin clearly demonstrate his brand of Louisiana Gothic: old, weathered French Quarter facades, cemeteries and Spanish moss, funerary sculpture and wrought iron railings.

Many critics consider Laughlin the first surrealist photographer in the United States. In his attempts to capture a vanishing urban landscape, he was influenced by French photographer Eugene Atget and other historical purists, and much of his work is nostalgic. He is renowned for haunting images of southern plantations, although his portraits, images of objects, and exploration of the subconscious through photographic allegories and staged tableaux are equally important among his works. The exhibition provides a broad overview of this important American master.

A self-taught photographer, Laughlin devoted himself to the medium in 1935 and had his first showing a year later. His 1948 publication *Ghosts Along the Mississippi* vaulted his career and has remained the standard reference for moody renditions of the state's plantation architecture. He continued to photograph until 1967, producing more than 17,000 negatives over the course of his career. He lectured and wrote extensively on the art of photography until his death in 1985.

These exhibitions are funded in part by a grant from the Louisiana State Arts Council through the Louisiana Division of the Arts and the National Endowment for the Arts and a Decentralized Arts Funding Grant from the Arts Council of Greater Baton Rouge in cooperation with the Louisiana Division of the Arts, Office of Cultural Development, Department of Culture, Recreation and Tourism, and Louisiana State Arts Council. They have also received the generous support of Jerry Fischer and John Turner.

IMAGES FAR LEFT, LEFT TO RIGHT:

Arthur Drooker, *Cook Bank* (ca.1905), Rhyolite, Nevada, 2007, digital pigment print. Image courtesy of the artist.

Clarence John Laughlin, *Shrouded Woman Against a Plaster Wall*, 1940, silver gelatin print, ©The Historic New Orleans Collection, Clarence John Laughlin Archive, accession no. 1981.247.3.196

IMAGES BELOW, TOP TO BOTTOM:

Ed Pramuk, *Orange Bridge*, 1974, acrylic on canvas, 38 x 42 in. Collection of Michael D. Robinson and Donald J. Boutté.

Julia Sims, *Autumn Morning*, c. 1990–95, color photograph. Image courtesy of the artist.



Lac Prison, 1981, neon, glass, aluminum. Hall Art Foundation.
Dauralde Abri (Abri Series), 2000, steel, cast plastic, neon, transformer

Keith Sonnier: Fort Crèvecoeur

THROUGH JANUARY 2

Keith Sonnier, a globally recognized artist best known for large-scale installations and sculptures that include neon, has never forgotten the allure of his Acadian birthplace. This exhibition, his first major one-person museum show in Louisiana, features a dozen large sculptural works created in direct response to his South Louisiana origins.

After completing his studies at the University of Southwestern Louisiana and, later, Rutgers University, he moved to New York City, where his career quickly took off.

In the 1960s and 1970s, Sonnier's use of neon and other industrial materials, coupled with his practice of intentionally exposing wires, connections, and electrical transformers, did not conform to the formal concept of fine art promoted by contemporary art critics like Clement Greenberg. Yet Sonnier was quickly picked up by legendary art dealer Leo Castelli, and his unorthodox work was soon assimilated into the mainstream.

Today, Sonnier's work is included in major museum collections throughout the world. He continues to investigate new materials and subject matter with uncommon intellectual rigor, and he now aims to spend more time in Louisiana to help nurture his budding foundation, Sac-o-Lait, an artist-residency program.

This exhibition has been funded in part by a grant from the Louisiana Endowment for the Humanities, the state affiliate of the National Endowment for the Humanities, and by a Local Project Assistance Grant from the Arts Council of Greater Baton Rouge, funded by the Mayor-President and the Baton Rouge Metro Council. It is also supported by generous grants from the Albemarle Foundation and the Baton Rouge Area Foundation: Cary Saurage Fund in honor of Alma Lee and H. N. Saurage Jr., the Reilly Family Foundation, and the Josef Stenberg Memorial Fund. America's Best Signs provided support for the installation.

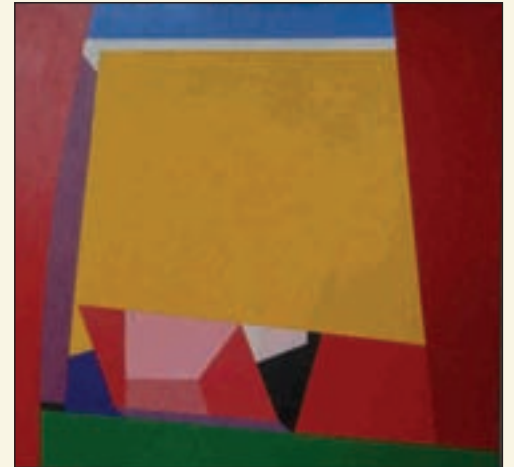
IN THE SOUPÇON GALLERY

Selections from the Michael D. Robinson and Donald J. Boutté Collection

JANUARY 12–MARCH 6

This is one in a series of small exhibitions featuring notable private collections of individuals who are helping to support the cultural vitality of Baton Rouge. Donald J. Boutté and Michael D. Robinson are well-known to area arts organizations and artists' circles for their generosity and encouragement. Over the years, they have amassed a growing number of contemporary artworks, most of which are Louisiana made. Among the Louisiana highlights of their collection are works by Lin Emery, John Geldersma, Frank Hayden, Ross Jahnke, Ida Kohlmeyer, Ed Pramuk, Steve Rucker, and Hunt Slonem. But they are particularly fond of supporting emerging local talent such as artist Jonathan Pellitteri.

Robinson and Boutté have been especially supportive of the Glassell Gallery in the Shaw Center. Appointed by Governor Bobby Jindal to the Louisiana State Arts Council and the Louisiana Lincoln Bicentennial Commission, Robinson has also served on the boards of several arts organizations.



IN THE COLONNADE GALLERY



Nature Photography by Julia Sims from the LASM Collection
THROUGH DECEMBER 5

Julia Sims earned the moniker "Swamp Lady" for her devotion to capturing on film the vast Manchac Swamp surrounding Lake Maurepas between Baton Rouge and New Orleans. These photographs taken between 1990 and 1995, many of which were featured in her popular book *Manchac Swamp: Louisiana's Undiscovered Wilderness*, capture the beauty and mystery of this hidden world and the need to preserve Louisiana's wetlands. A resident of Ponchatoula, Sims is one of the premier photographers of Louisiana wildlife. Her work has been featured in *National Geographic*, *National Wildlife*, *Nature Conservancy*, *Sierra*, *Birder's World*, and *Ducks Unlimited*.



For 50 years, NASA has been famous for counting backward from 10 to zero. But a final countdown now under way will stand out among them all. After 132 space shuttle missions, only two scheduled missions remain before the shuttle fleet retires. The final launch is set for the shuttle Endeavor on February 27, 2011. The first shuttle made its maiden flight from the Kennedy Space Center in Florida on April 12, 1981, and over the following 30 years the launches became so routine that the general public seemed to have taken them almost for granted. For nearly a majority of Americans now living, there has never been an American spacecraft other than the shuttle. Of the five shuttles built during these 30 years, three remain: Discovery, Atlantis, and Endeavour.

The space shuttle was designed and built to play a vital role in constructing the International Space Station (ISS), the world's largest space laboratory and residence, due for completion early next year. The assembly of the space station is one of the great engineering achievements of mankind and a symbol of our nation's technological capability and creativity. Although the shuttle was supposed to be routine, safe, and affordable, it was never routine and it was very expensive, but its legacy will be that of the most complex machine ever built, the first ever reusable spacecraft that gave us access to space. Without the shuttle, there would be no International Space Station.

The shuttle averaged more than four launches a year, including the delivery of numerous satellites to the far reaches of our solar system. All those gorgeous views of the universe, the wispy galaxies and colorful clouds of dust and gas, are courtesy of the Hubble Space Telescope, launched by the shuttle and then revisited by three shuttle service missions. Yet most Americans remain unaware that the shuttle missions are about to end and that there are no definite plans to either replace the shuttle spacecraft program or to send manned missions to nearby destinations. The space shuttle era seems to be ending in uncertainty. Studies show that a lack of awareness and a lack of support for NASA's future plans are strongly correlated. In a recent random sample of 110 elementary

“Without
the shuttle,
there would
be no
International
Space
Station.”

Countdown



“The shuttle program is a statement to the bold vision of the American people ...”

schoolteachers in Houston (location of the Johnson Space Center), results of a questionnaire showed that only 34% of the teachers were aware that the shuttle could only go into Earth's orbit. The remainder of teachers thought the shuttle was designed to go to the moon, Mars, or asteroids. Although respondents were supportive of human exploration (68%), the strongest responses related to wanting their children or grandchildren to be a shuttle astronaut (86% yes or maybe).

Earlier this year, several options for the post-shuttle space program presented by the U.S. Human Space Flight Committee were dealt a setback. A proposed new human spaceflight program, called the Constellation, would have replaced the shuttle by taking astronauts routinely back into low-orbit space. That program was canceled in favor of a more ambitious goal that would send humans to Mars by the mid-2030s. However, the Mars mission goal is not well defined, and its funding and congressional support currently remains elusive. Meanwhile, without the shuttle, NASA will have to

spend millions of dollars to “buy” transport flights on Russian Soyuz capsules in order to ferry U.S. astronauts to the ISS.

Despite no clear next-generation space launch vehicle, NASA's short-range plans are to encourage the development of commercial spacecraft and invest in advanced space-propulsion technology. NASA will work with private companies like Boeing to develop so-called space taxis that could transport astronauts and space tourists. NASA's plan to rely on the commercial space industry to get humans and supplies into orbit could reduce abilities that we have worked so hard to develop. As NASA charts a new course for future spaceflight, much depends upon agreement between the commercial space industry's objectives and NASA's mission not only to explore space but to make living in space more sustainable for humans.

This past October, with only the two official shuttle missions remaining, Congress approved funding that would add an extra flight, on the shuttle Atlantis. This third, yet-to-be-

determined mission would take place in June. After the Endeavour and Atlantis completes the planned missions, the shuttle fleet will be retired. But retirement for the three remaining space shuttles simply means the start of new lives. Eventually, they will be on public display at one of more than a dozen museums currently vying for one of the iconic 76-ton shuttles. Since the shuttle Discovery is the oldest, it will head to the Smithsonian Air & Space Museum in Washington, D.C.

After 30 years of space shuttle flights, it is a bittersweet end of an era. Over those years, there have been triumphant and sometimes tragic outcomes, but also a deep sense of national pride. The shuttle program is a statement to the bold vision of the American people, and we are truly fortunate to have lived during this moment in history.

—Jon Elvert
Director, Irene W. Pennington
Planetarium

BULLETINS

LASM BOARD OF TRUSTEES

OFFICERS

Rose Hudson, Chairwoman
 Jeff Koonce, Vice Chairman
 Mike Lutgring, Secretary
 Glen LaBorde, Treasurer
 Chris Jones, Member-at-Large
 Victor Gregoire, Member-at-Large

MEMBERS

Thomas J. Adamek
 Leslie Greely Albritton
 Jacqueline Beauchamp
 Winston DeCuir Jr.
 David Faulk
 Dede Ferrara
 Jeff Holeman
 Kevin Knobloch
 Angie LaPlace
 Colleen Levy
 Debra Lockwood
 Forrest E. Mills Jr.
 David Moore
 Malcolm Myer
 Sharon P. Pennington
 Gary Phillips
 George Pietrogallo
 Rene Ragas
 Tommy Teepell
 Stephen Toups

EX-OFFICIO

Linda Gibson
 2010 GALA CHAIR

Carol S. Gikas
 PRESIDENT AND
 EXECUTIVE DIRECTOR,
 LASM

Holiday Merriment at LASM

DOWNTOWN Festival of Lights

FRIDAY, DECEMBER 3, 5:00–8:00 PM

When you and the family come downtown to see the lighting of the trees, be sure to stop in at LASM for holiday activities with Santa's elves, shopping in The Museum Store, special planetarium showings at 5:00, 7:00, and 8:00 PM. Stay warm with hot cider and Christmas cookies, and enjoy free admission with the donation of a new toy that benefits Toys for Tots (one toy per person).

Free Annual Holiday Ornament Workshop

FIRST SUNDAY, DECEMBER 5, 1:00–3:00 PM

Kids and their favorite adults are invited to make memories together in this delightful annual workshop in Discovery Depot. Participants will create tree-worthy holiday ornaments that will become family keepsakes.



Popular and charming, these 16 oz. Eco Cups are porcelain with a silicone lid and sleeve. Eco-friendly and reusable, they are 3.5" diameter x 6" tall and are dishwasher and microwave safe.

Shop The Museum Store at LASM for Unique, Affordable Gifts

The Museum Store is your best source for holiday stocking stuffers and gifts under \$20! Not only will you find irresistible selections for all ages, your purchase will support LASM's programs and exhibitions. Pricier, elegant gifts of jewelry, scarves, purses, and books for grownups plus all sorts of items for the munchkins on your list are available, too. Gift wrap is always complimentary. Members, don't forget your 20% discount!

Have the Best Holiday Party Ever!

Are you looking for the perfect place to have your holiday party? From a small dinner party for 50 to a large reception for 500, LASM is the place for it! Contact Cindy Verdin, event coordinator, at 225-344-5272, ext. 137.

LASM after Hours

A GALLERY TOUR AND BOOK SIGNING WITH ARTHUR DROOKER

THURSDAY, JANUARY 20, 5:30–7:30 PM

Photographer Arthur Drooker will lead a tour of American Ruins: Photographs by Arthur Drooker and autograph copies of his award-winning book, available in The Museum Store. Drooker will discuss his unique infrared technique, provide insight into the historical significance of the architectural landmarks on exhibit, and discuss how he selected the sites. Enjoy complimentary refreshments with admission: members free, nonmembers \$7.

SPECIAL FIRST SUNDAY PROGRAMS

FREE ANNUAL HOLIDAY ORNAMENT WORKSHOP

See column at left for details.

AN ARTIST'S PERSPECTIVE TALK WITH A. J. MEEK

SUNDAY, FEBRUARY 6, 2:00 PM

Join A. J. Meek, local photographer and Louisiana State University professor emeritus of art, for an informal gallery talk about the current exhibitions American Ruins: Photographs by Arthur Drooker and The Dark Side: Photographs by Clarence John Laughlin, 1935–1961. Meek will offer insight into the role of the photographer as artist and documentarian, and speak about the photographic techniques employed by both artists.



DECEMBER PROGRAMMING
 UNDERWRITTEN BY



JANUARY PROGRAMMING
 UNDERWRITTEN BY



FEBRUARY PROGRAMMING
 UNDERWRITTEN BY



L to r: 2010 gala chair Linda Gibson; 1998 and 1999 chair Paula de la Bretonne; 1990 chair Sharon Lea; chair of the first (1986) gala and 2010 honorary chair Winnie Byrd; 1989 chair Nadine Russell; 2006 and 2007 chair Edy Koonce

glow
the 25th Annual
LASM Gala

Everyone Glowed
at the 2010 Gala!

On Friday, October 8, Gala chair Linda Gibson and her enthusiastic committee presented Glow, one of the most fabulous galas yet! Lead sponsors included Lee Michaels Fine Jewelry and the Irene W. and C. B. Pennington Foundation.

This year's gala supported LASM's educational programming. More than 600 guests honored all the chairs of the galas held over the 25 years since this fundraising event began. Gala guests were the first to preview the exciting exhibition Keith Sonnier: Fort Crèvecoeur.

Special thanks go to Lance Hayes, Rogers & McDaniel, and Lamar Companies for their imaginative designs, inspired by the colorful neon in the Sonnier exhibition. A highlight of the evening was the raffle of a fabulous pair of \$5,500 diamond stud earrings donated by Lee Michaels Fine Jewelry and won by Debra Foumet.

Guest enjoyed a fabulous buffet provided by more than 28 of Baton Rouge's finest restaurants and caterers, and a sushi and wine lounge added to the fun. Wonderful auction items were donated by 200 generous businesses and individuals in the community. Ned Fasullo and his big band and dancing girls from Of Moving Colors provided music and entertainment.

LASM is already assembling a committee to plan the 26th Annual LASM Gala, set for Friday, October 21, 2011. For information about sponsorships or volunteering, contact Pam Sills, psills@lasm.org or 344-5272, ext. 130.



TOPTO BOTTOM:
L to r: Sisters Susan White and Linda Gibson (gala chair), and Carolyn Gibson (Linda's mother-in-law)

Mayor Kip Holden with Sharon and Claude Pennington

Jeff and Marcy Holeman with Kim and David Holeman Sr.

Sara Monsour, Sarah Lyles, Connie Bolen, and Heather Kleinpeter Savoy

Dancers from Of Moving Colors livened up the evening

Photographs courtesy of Peter Haendler



ART EDUCATIONAL
PROGRAMMING
UNDERWRITTEN IN
PART BY



American Airlines is the
official airline sponsors of
LASM programming.



JOIN LASM TODAY!

SADLY MISSED

LASM is saddened by the death of Allen Brent, longtime close friend of LASM and husband of the late Adalié Brent, first director of the museum.

LASM Membership Application

NEW MEMBER PAST MEMBER GIFT MEMBERSHIP

PLEASE RETURN WITH YOUR PAYMENT TO: LASM, Attn. Membership, P.O. Box 3373, Baton Rouge, LA 70821-3373. You can also join by phoning 225-344-9478.

Membership Level FRIEND \$50 FAMILY I \$75 FAMILY II \$100 BEST VALUE! CONTRIBUTOR \$150
 PATRON \$300 SUPPORTING \$500 SUSTAINING \$1,000 PREMIER \$2,500

Member or Gift Recipient Information Please print clearly

(MR., DR., MRS., MS.) _____

ADDRESS, APT. NO. _____

CITY, STATE, ZIP + 4 _____

PHONE (WORK) _____ (HOME) _____

E-MAIL _____

Gift Giver's Information for Gift Membership

NAME _____

ADDRESS, APT. NO. _____

CITY, STATE, ZIP + 4 _____

Please send membership packet or renewal to: GIFT GIVER GIFT RECIPIENT

GIFT CARD SHOULD READ: _____

Payment Check payable to LASM enclosed Charge \$ _____
to: VISA MASTERCARD AM EX DISCOVER

ACCOUNT NO. _____

EXP. DATE _____

NAME ON CARD (PLEASE PRINT) _____

SIGNATURE _____

Matching-gift forms are enclosed. Please send additional information about volunteering at the museum.

*Student/Teacher memberships may be purchased for \$25 at the LASM ticket desk. Must have a valid I.D.

THANK YOU!

DONOR LEVEL MEMBERS

- Sustaining
- Monique and Brent Evans
- Carolyn and Dan Heard
- Suzanne Turner and Scott Purdin
- Mary Ann Stemberg
- Supporting
- Jolie and Brent LeBlanc
- Sharon and Claude Pennington
- Jenny and Sean Reilly
- Maureen and Lonnie Stockwell
- Madhuri and Siva Yadlapati
- Patron
- Barbara Beckmann
- Patsy and Rick Farmer
- Dana and David Moore
- Gery and Frank Prestia
- Contributor
- Heidi and Bret Barrick
- Robert C. Downs
- Judith and Frank Foil
- Leu Anne and Cyrus Greco
- Robert Grissom
- Millicent Kopfinger
- Beth and Paul Paskoff
- Rene Solomon
- Anne and David Winkler
- MEMBERSHIP UPGRADES
- Family II
- Kathy and Dwayne Honore
- Denise Crifasi
- Doveal and Henry Essex
- Shannon and Samuel Cole
- Mirabelle and Jude Iroh
- Dena and Reginald Morrison
- Erin and Mark Humphrey
- Rose Marie and Johnny Fife
- Cheryl and Robert Kirchoff
- Family I
- Shelly Fontenot
- MATCHING GIFTS
- ExxonMobil
- Carol bird
- Robert Bradford
- Lillian Landrum
- Carolyn Stutts
- ANNUAL APPEAL
- Patrons
- Rose Hudson
- Gabriella and Marshall St. Amant
- Marjorie and Scott Sullivan



You Can SPARK DISCOVERY!

As the holidays approach and we look forward to a new year ahead, please consider a gift to LASM's Annual Appeal, so critical in this time of economic uncertainty. This is the second year that LASM has been affected by outside economic factors, including deep cuts in government and foundation grants.

Quality art and science programming is possible only with the generous contributions from loyal friends like you. A successful Annual Appeal will help LASM to continue providing educational and entertaining programs that encourage discovery, inspire creativity, and promote lifelong learning.

Donations to the Annual Appeal, which are separate from your membership dues, are welcome at any time, but especially now. We hope you can respond with a check, credit card payment, or stock transfer.

Donors to LASM's Annual Appeal will be recognized in upcoming LASM Quarterly newsletters. Should you like to discuss the difference your gift will make, please contact Pam Sills, psills@lasm.org or 344-5272 ext. 130.

Member benefits

- Free admission to the museum and planetarium galleries for one full year
- Discounts on sky shows, visual music shows, films, and special exhibitions
- Invitations to special members-only events
- Birthday party privileges
- Free LASM Quarterly and e-mail bulletins
- 20 percent discounts in The Museum Store at LASM
- Discounts on workshops and classes
- Invitations to museum openings, receptions, lectures, and the annual Gala

LEVELS

- Friend (\$50): All benefits for ONE or TWO persons
- Family I (\$75): All benefits for SIX persons
- Family II (\$100): All benefits for EIGHT persons, plus free or discounted admissions to more than 200 participating science museums worldwide plus caregiver privileges.
- Contributor (\$150): All the preceding benefits plus TWO one-time family passes
- Patron (\$300): All the preceding benefits plus FOUR one-day family passes, invitations to preview films, and a 20 percent discount in the Museum Store at LASM.
- Supporting (\$500): All the Patron benefits plus TWO additional one-day family passes.
- Sustaining (\$1,000): All the Patron benefits plus FOUR additional one-day family passes and invitations to major donor events.
- Premier (\$2,500): All the Sustaining benefits plus recognition for sponsoring an upcoming program of your choice.

CALENDAR



DECEMBER

1 WEDNESday

Continuing programs

- Coral Reef Adventure large-format film
- Mummies: Secrets of the Pharaohs digital movie
- Season of Light sky show
- Holiday Music Magic family visual music show
- Space Park 360 visual music show
- Pink Floyd: The Wall visual music show
- Keith Sonnier: Fort Crèvecoeur sculpture exhibition
- Nature Photography by Julia Sims from the Permanent Collection

3 FRIDAY

Downtown Festival of Lights activities at LASM, 5:00–8:00 PM

5 first sunday

- Holiday Ornament Workshop, 1:00–3:00 PM
- **Final day**, Nature Photography by Julia Sims from the Permanent Collection

24 FRIDAY

Closed for Christmas holiday

25 SATURDAY

Closed for Christmas holiday

JANUARY

1 Saturday

Closed for New Year's holiday

2 FIRST Sunday

- **Final day**, Coral Reef Adventure large-format film
- **Final day**, Season of Light sky show
- **Final day**, Holiday Music Magic family visual music show
- **Final day**, Keith Sonnier: Fort Crèvecoeur

4 Tuesday

- **First day**, Bad Astronomy: Myths and Misconceptions sky show
- **First day**, Digital Universe (updated) sky show

8 SATURDAY

- **First day**, Lost in Time—Two Exhibitions in Black and White
- **First day**, Earth Moon & Sun family show

12 Wednesday

First day, Selections from the Michael D. Robinson and Donald J. Boutté Collection

20 Thursday

LASM After Hours: Gallery Tour and Book Signing with Arthur Drooker, 5:30–7:30 PM

FEBRUARY

6 FIRST SUNDAY

An Artist's Perspective Talk with A. J. Meek, 2:00 PM

26 Saturday

Final day, Pink Floyd: The Wall visual music show

27 Sunday

Final day, Mummies: Secrets of the Pharaohs digital movie

BIRTHDAY PARTIES AT LASM

MUSEUM PARTIES

TIMES Saturdays, 10:30–12 NOON and 2:00–3:30 PM

Sundays, 2:00–3:30 PM

PLACE Discovery Depot

PARTY THEMES

Digging Dinosaurs Art Box Artists
Hawaiian Luau Mad Scientist
Pirates Princess Tea Party

PLANETARIUM PARTIES

TIMES Saturdays & Sundays, 2:00–3:30 PM

PLACE Josephine Pugh Lamar Classroom II (upstairs in the planetarium)

PARTY THEMES

Space Odyssey Alien Invasion

COST

LASM members \$170*
Nonmembers \$245*
(includes a one-year Family I membership)

*Price includes up to 10 children. Each additional child is \$10. Maximum 20.

For your convenience, we offer:

Paper goods \$25
Helium balloons \$12 per doz.

Extras

Planetarium show \$4 per child & senior \$5 per adult

There is no place like a museum or planetarium to have fun! You and your child choose one of the above themes, and LASM will entertain the partygoers with stories, activities, and projects centered on the theme. You provide the refreshments, LASM will provide the fun! Museum parties are programmed for children ages 4–10. Planetarium parties are programmed for children ages 5–12.

Call 344-5272, ext. 149, for more information or to make reservations.

The Museum Store at LASM offers Gift Registry! Simply stop in and have your birthday child choose from our complete selection. We will provide you with cards to slip into party invitations informing party guests that your child is registered.



LOUISIANA ART & SCIENCE MUSEUM
IRENE W. PENNINGTON PLANETARIUM

POST OFFICE BOX 3373
BATON ROUGE, LA 70821

FORWARDING SERVICE REQUESTED

NON-PROFIT ORG.
US POSTAGE
PAID
BATON ROUGE, LA
PERMIT NO. 751

LASM's Mission

The Louisiana Art & Science Museum seeks to enhance the understanding and appreciation of art and science for general audiences and students by presenting unique educational and entertaining experiences that encourage discovery, inspire creativity, and foster the pursuit of knowledge.



www.facebook.com/theLASM
www.twitter.com/LASM

HOURS

Closed Mondays & major holidays

TUESDAY-FRIDAY 10 AM-3 PM

SATURDAY 10 AM-5 PM
(Planetarium open till 8 PM)

SUNDAY 1-4 PM



HOLIDAY CLOSING HOURS
December 21-January 7

TUESDAY-FRIDAY 4 PM

SATURDAY & SUNDAY 5 PM

ADMISSION

Group rates are available.
Call 225-344-5272, ext. 137.

Through December 31, receive free admission to one planetarium sky show or film when you purchase a general admission ticket (\$7 adults, \$6 children and seniors).

LOUISIANA ART & SCIENCE MUSEUM
100 River Road South
Baton Rouge, Louisiana 70802

225.344.5272
www.lasm.org

Irene W. Pennington Planetarium All shows are subject to change.
Children under 3 years of age are not permitted in planetarium shows

Day	Show	Times
TUESDAY-FRIDAY	Sky Show	10 AM, 12 NOON, 2 PM
	Large-Format Film	11 AM, 1 PM, 3 PM
SATURDAY	Sky Show	12 NOON, 2 PM, 4 PM, 6 PM
	Large-Format Film	11 AM, 1 PM, 3 PM
	Family Show	10 AM, 5 PM
	Visual Music Shows	7 PM, 8 PM
SUNDAY	Sky Show	2 PM, 4 PM
	Large-Format Film	1 PM, 3 PM

Admission Type	Description	Rates	
		Adults	Children* & Seniors**
GENERAL ADMISSION	MUSEUM	\$7	\$6
	MUSEUM + 1 PLANETARIUM SHOW	\$9	\$8
MEMBER ADMISSION	MUSEUM	FREE	FREE
	MUSEUM + 1 PLANETARIUM SHOW	\$5	\$4
FIRST SUNDAY ADMISSION	MUSEUM	FREE	FREE
	MUSEUM + 1 PLANETARIUM SHOW	\$5	\$4

* Children (2-12 years) Children younger than 24 months are admitted to family shows free on weekends only. Children 3 to 12 years old are charged the child rate for all other programming.

** Seniors (65+)

LASM

Upper and Lower Art Galleries

Bert S. Turner Family Atrium

Soupon Gallery

Colonnade Gallery

Children's Galleries

Discovery Depot

Science Station

Irene W. Pennington Planetarium

ExxonMobil Space Theater

Solar System Gallery

McMains Universe Gallery

Planet Tower

Josephine Pugh Lamar Classrooms

Ancient Egypt Gallery

Adalié Brent Auditorium

The Museum Store at LASM

EDITOR
CATHERINE MCKENZIE

DESIGNER
NICOLE DUET LATIOLAIS



LASM receives generous operating support from East Baton Rouge City-Parish Government, the members of LASM, the Community Fund for the Arts Campaign, and the Louisiana Division of the Arts, Office of Cultural Development, Department of Culture, Recreation and Tourism.



LASM is fully accredited in accordance with the standards of excellence prescribed by the American Association of Museums.